

# Australia House

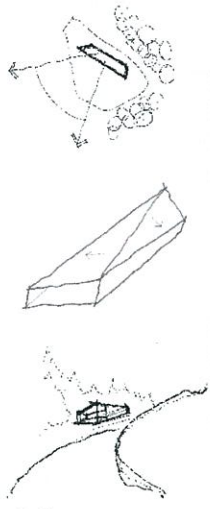
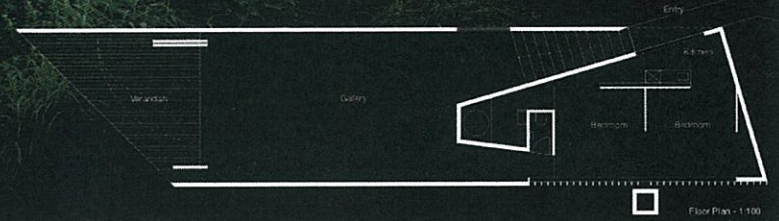
## オーストラリアハウス

The original Australia House was a once abandoned Japanese farmhouse with gabled roof. The new house adopts a similar archetypal form of shelter, the eeked. The eeked profile transforms across the length of the building until it meets a similar form in reverse at its opposite end. The act of transformation implies a journey between two cultures. Its end mirrors the starting point, both similar and different.

Within the form, the residence and the atelier/gallery are spaced together obliquely in the manner of a traditional Japanese timber scarf joint. The splice both demarcates and joins private and public spaces.

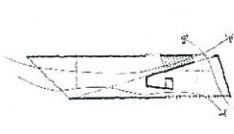
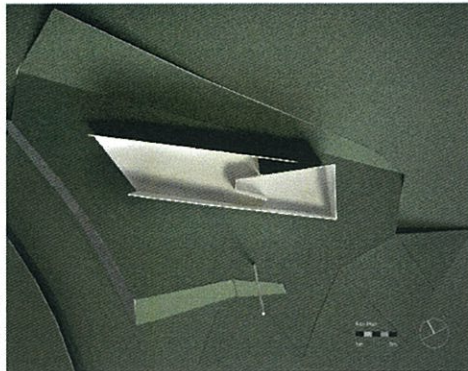
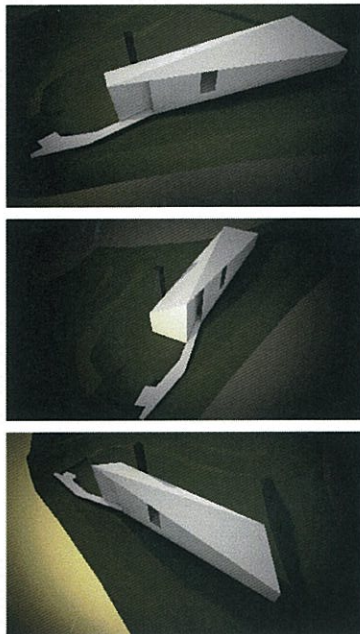
An open veranda framed within the eeked completes the journey, captures the view, and extends the atelier toward the landscape.

Material will emphasise the passage of time through weathering. Timber collected and re-used, from local or Australian sources, is precisely matched to match the folding form whilst recording history on its surface.



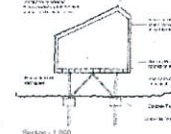
### The Site

In late July we visited the site. It was summer in the Echigo-Tsumari region and we were surrounded by an intense green landscape. It was tranquil and contemplative, characteristics to embody in a new building.



### Sustainability

The new Australia House has been sited to maximise passive solar orientation and to garner cross-ventilation to assist comfort in the summer months. Materials will be sustainably sourced.



### Disaster Prevention

Our structural engineer has proposed a construction system which employs earthquake resistant building strategies.



### Choreography

The new Australia House nestles against the landscape berm to the north of the site. A journey is choreographed from arrival, across the threshold and through the building which finishes with a view towards the mountains beyond.

